

Tejas Transport Solutions for Content

Future Ready. Today



Distribution Webpage

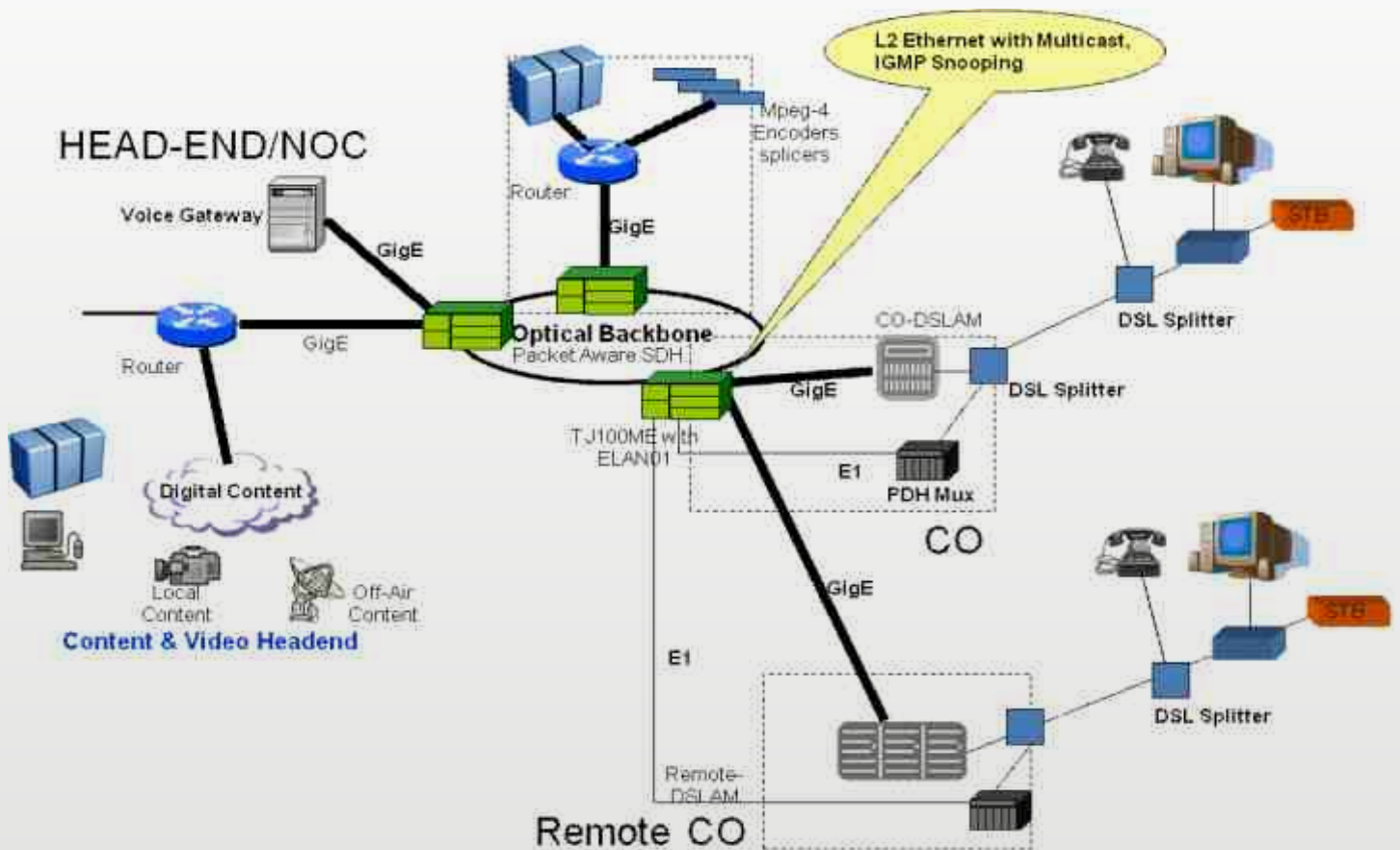
Last few years have seen an impressive growth in the number of IPTV subscribers. IPTV is a very viable and cost effective mode of distribution of digital TV, and hence lots of DSL/Wireline broadband service providers are rapidly upgrading their networks to support triple play.

IPTV distribution throws up certain challenges for a transport network. Mostly since the last mile usually has bandwidth constraints, dynamic multicast is important. Ability to add or remove a client from any multicast group dynamically, with quick leave and join times are key for a satisfactory user experience. Also since loss of even one packet can lead to freeze/loss of an entire multiframe, so minimal packet drops and high reliability of the network are important.

Ethernet with native multicast is an ideal technology for IPTV distribution. Coupled with new features like IGMP snooping & proxy, 50ms protection and low latency and jitter (due to advanced traffic engineering) make Carrier Ethernet networks suitable for IPTV distribution.

Tejas supports these features both on the TJ2000 series of Carrier Ethernet Switches, and on the ELAN series of Carrier Ethernet blades for SDH. Thus the same services are available irrespective of whether the service provider chooses Pure packet Ethernet over Fiber OR Ethernet over SDH for it's transport.

Tejas solutions also reduce the load on the server by not forwarding duplicate IGMP packets to the server.



TEJAS SOLUTIONS